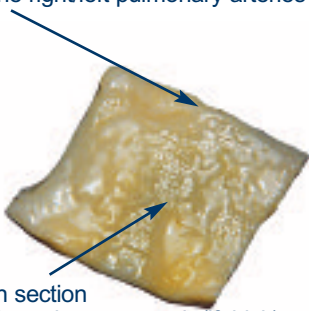




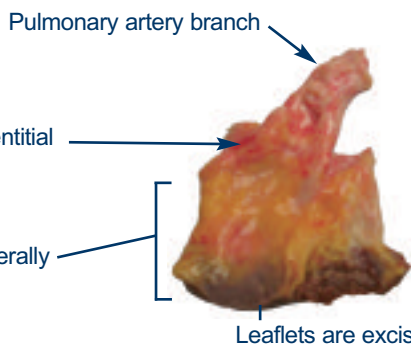
### Pulmonary Patch Graft

Pulmonary patch section produced from the right/left pulmonary arteries (if thin)

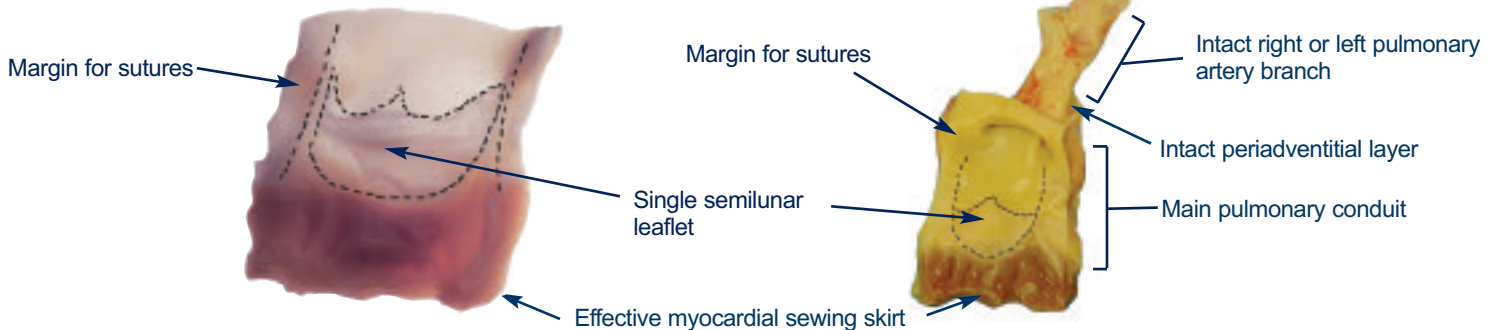


Pulmonary patch section produced from the pulmonary trunk (if thick)

### Hemi Pulmonary Artery



### Mono Cusp Patch



LifeNet Health Bio-Implants Division is a leader in the engineering and processing of dental, cardiovascular, spinal and orthopedic bio-implants. The CardioGraft line, bio-implants for cardiac and vascular surgeries, delivers the high quality and proven performance you expect for all of your procedures.

- ▶ Non-thrombogenic
- ▶ Non-hemolytic
- ▶ No immunosuppressive therapy required
- ▶ Human tissue - most closely resembles native tissue
- ▶ High resistance to infection

FlexiGRAFT®

MatriGRAFT®

OraGRAFT®

OsteoBIOLOGICS

► CardioGRAFT®

ReadiGRAFT®

VertiGRAFT®

## Mono Cusp Patch



### General Processing Guidelines:

- ▶ Single leaflet section of main pulmonary trunk can have entire left or right pulmonary artery intact



### General Processing Guidelines:

- ▶ Single leaflet section of main pulmonary trunk
- ▶ Original annulus diameter
- ▶ Length and width measured in centimeters
- ▶ No minimum or maximum width

**Clinical Applications:** Tetralogy of Fallot; RVOT/root enlargement procedures

<u>Code</u>	<u>Description</u>
RMCP	Right Monocusp Patch
LMCP	Left Monocusp Patch
MCP	Monocusp Patch

<u>Sizing</u>
W/L Varies
W/L Varies
1.0 cm of conduit distal to commissural apex or greater

## Pulmonary Patch Graft (thick and thin)



### General Processing Guidelines:

- ▶ W = 2 - 5 cm; L = 3 - 8 cm  
(measurements taken using a ruler)

**Clinical Applications:** Right side/pulmonary reconstructions; Tetralogy of Fallot; single ventricle/double outlet (Fontan); truncus arteriosus; ASD/VSD repair

<u>Code</u>	<u>Description</u>
PPGN	Pulmonary Patch Graft – Thin
PPGK	Pulmonary Patch Graft – Thick

<u>Sizing</u>
W = 2 - 5 cm    L = 3 - 8 cm
W = 2 - 5 cm    L = 3 - 8 cm

## Hemi Pulmonary Artery



### General Processing Guidelines:

- ▶ Cusps must be excised
- ▶ D = mm, original annulus diameter
- ▶ L = cm, no minimum or maximum size limits
- ▶ Minimum conduit width is 3 cm

**Clinical Applications:** Tetralogy of Fallot; pulmonary atresia; single ventricle/double outlet (Fontan); truncus arteriosus; transposition of great vessels; hypoplastic left heart (modified Fontan); aortic stenosis/atresia

<u>Code</u>	<u>Description</u>
RHPA	Right Hemi-Pulmonary Artery
LHPA	Left Hemi-Pulmonary Artery

<u>Sizing</u>
Varies
Varies



1864 Concert Drive  
Virginia Beach, VA 23453-1903  
TEL: 1-888-847-7831  
FAX: 1-888-847-7832

[www.AccessLifeNet.org](http://www.AccessLifeNet.org)

65-0090-01 REV. 001/05-08

All cryopreserved tissue is shipped for next-day delivery.

The LifeNet Health logo is a registered trademark of LifeNet Health, Inc. CardioGraft, FlexiGraft, OraGraft, Readigraft, and MatriGraft are registered trademarks of LifeNet Health, Inc., Virginia Beach, VA. VertiGraft is a registered trademark of DePuy Spine, Inc. ©2008 LifeNet Health. All rights reserved.