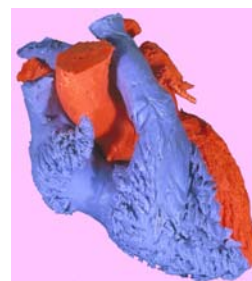


28th Feb, 1st & 2nd March 2011

Hands-on Cardiac Morphology



Course Director:

Prof. Yen Ho,

Head of Cardiac Morphology, Royal Brompton Hospital

Applied Morphology

Normal heart structures and Congenital Heart Defects

Incorporating the Foundation Course under the auspices of the British Congenital Cardiac Association

In its 20th year, this well recognized 3-day course takes registrants from the basics of normal hearts and simple congenital malformations, through to the more complex defects and the conduction system, with live video demonstrations. The “*hands-on*” component (practicals) allows registrants to examine specimens under the guidance of tutors. This unique course of applied morphology is recommended for **trainees** seeking foundation knowledge as well as **advanced** professionals who require more details appropriate to their specialty. It allows all participants to appreciate the arrangement of the malformations in 3-dimensions. **Our highly experienced team of tutors includes surgeons, pediatric cardiologists and pathologists who will provide guidance tailored to the needs of the participants.**

Please note:

To allow for an optimal tutor-attendee ratio at hands-on, we have to limit the number of participants for the full course. **Register early to avoid disappointment!**

Programme endorsed by:

British Cardiovascular Society

Cardiology curriculum: 3.1 Advanced adolescent and adult congenital heart disease, 3.5 Interventional Cardiology, 3.10 Advanced transthoracic echocardiography



**Developmental
Anatomy
and Pathology**

ESC Working Group



**EUROPEAN
SOCIETY OF
CARDIOLOGY®**

For more information, contact

Prof S Yen Ho

Cardiac Morphology Unit

Royal Brompton Hospital

Sydney Street

London SW3 6LY, United Kingdom

Tel: +44 20 7351 8751

Fax: +44 20 7351 8230

e-mail: Morphology@rbht.nhs.uk

www.cardiacmorphology.org

www.rbht.nhs.uk/cardiacMorphology